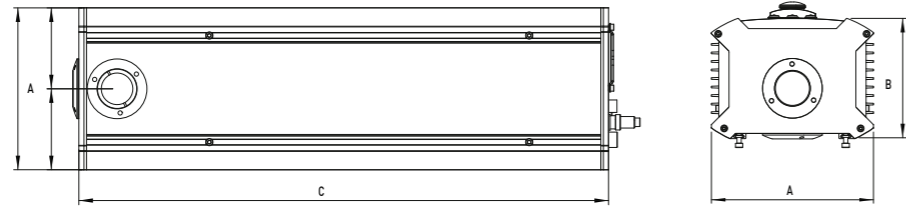


K-1000

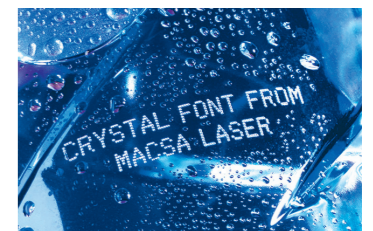


SYSTEM TYPE		K-1010 SP net	K-1010 PLUS	K-1030 SP net	K-1030 PLUS				
POWER		10W		30W					
WAVELENGTH		9,3µm / 10,2µm / 10,6µm							
MAINS SUPPLY		125V / 230V 50/60 Hz (1 Fase + N) 330VA		125V / 230V 50/60 Hz (1 Fase + N) 660VA					
DIMENSIONS	Split Head (optional)	108x106,5x114 mm							
	Tube (A x B x C)	190x141x621 mm		235x193x656 mm					
WEIGHT		Net: 19kg Gross: 24kg		Net: 32kg Gross: 40kg					
SYSTEM		Laser source, control and power electronics, CPU and scanners built into the laser tube.							
OPTICS	Working distance (mm)	Focal length (mm)	Marking area (mmxmm)	Beam diameter MODELS SP (µm)	Beam diameter MODELS PLUS (µm)				
	85	95	60x60	<385µm -S	<192µm -0				
	115	125	75x75	<506µm -0	<253µm -0				
	150	160	100x100	<810µm -0	<405µm -S				
	190	200	100x100	<972µm -0	<486µm -0				
	230	240	150x150	<1296µm -0	<648µm -0				
	310	320	200x200	<1660µm -0	<830µm -0				
400	410	250x250	<385µm -S	<192µm -0					
µm: microns S: Standard O: Optional									
SOFTWARE	<ul style="list-style-type: none"> ScanLinux V5.2.7 and higher. Software Marca V5.6.9.a and higher. Internal bar code. Software Marca Lite. 								
USER INTERFACE	<ul style="list-style-type: none"> Hand held terminal / Touch screen / PC 								
CONTROL BY	<ul style="list-style-type: none"> Hand held terminal with ScanLinux software. Touch screen with ScanLinux software. Full graphics interface: it includes Marca™ software, Hasp key and Ethernet cable (TCP/IP). Software Marca Lite: it includes Marca™ software, Hasp key and Ethernet cable (TCP/IP). 								
MARKING HEAD	KS-1000 - 9,3 µm	KS2-1000 - 10,2 µm		KS-1000 - 10,6 µm					
	CO ₂ sealed laser tube R.F. technology Wavelength: 9,3 microns	CO ₂ sealed laser tube R.F. technology Wavelength: 10,2 microns		CO ₂ sealed laser tube R.F. technology Wavelength: 10,6 microns					
	ACCESSORIES Beam pointer- Shaft encoder kit - Mounting support - Photocell kit								
ENVIRONMENTAL CONDITIONS	10°C [50°F] to 40°C [104 °F] external temperature Humidity <95% non-condensation No vibrations								
K-1010 PLUS SHS (10,6 µm) SPEED	PAPER LABEL	Max. Speed line (m/min)	Cadence (mm)		Scanners speed (mm/s)				
			1 Line / 8 Charact.	575	290	245000	124000	20000	65
			2 Line / 8 Charact.	310	140	130000	60000	20000	65
			3 Line / 8 Charact.	190	95	80000	40700	20000	65
	PET	Max. Speed line(m/min)	Cadence (mm)		Scanners speed (mm/s)				
			1 Line / 8 Charact.	425	265	182000	113500	10000	75
			2 Line / 8 Charact.	215	130	92100	55700	10000	75
			3 Line / 8 Charact.	145	85	60000	36400	10000	75
	GLASS	Max. Speed line(m/min)	Cadence (mm)		Scanners speed (mm/s)				
			1 Line / 8 Charact.	195	175	83500	75000	2000	120
			2 Line / 8 Charact.	105	85	45000	36400	2000	120
			3 Line / 8 Charact.	65	55	27800	23500	2000	120
4 Line / 8 Charact.	50	45	21400	19200	2000	120			
Normal → Newpat Font Italic → Crystal Font									

K - SERIES

A VERSATILE RANGE OF CO₂ LASER PRODUCTS FOR HIGH QUALITY

CODING AND MARKING AT A VERY LOW COST



Document reference 150513-510209-V1 Specifications subject to change

K-1000 by MACSA
Fast. Powerful. Reliable.



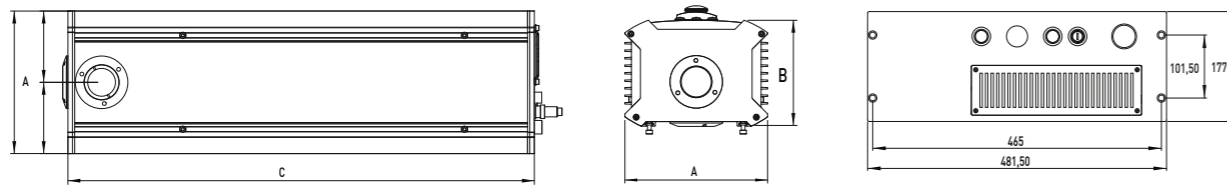
MACSA ID, S.A.
T. +34 902 101 828 - F. +34 902 103 915
Girona 46, 08242 Manresa, Barcelona SPAIN
macsa@macsa.com - www.macsalaser.com

Macsa id
a code you can trust

K-1000 by MACSA
Fast. Powerful. Reliable.

Macsa id
a code you can trust

K-1000 PLUS UHS



SYSTEM TYPE	K-1010 PLUS UHS	K-1030 PLUS UHS	K-1060 PLUS UHS	K-1080 PLUS UHS
POWER	10W	30W	60W	80W
WAVELENGTH	9.3µm / 10.2µm / 10.6µm			
MAINS SUPPLY	125V / 230V 50/60 Hz [1 Fase + N] 330VA	125V / 230V 50/60 Hz [1 Fase + N] 660VA	125V / 230V 50/60 Hz [1 Fase + N] 1600VA	125V / 230V 50/60 Hz [1 Fase + N] 1900VA

DIMENSIONS	Split Head (optional)	108x106,5x114 mm		
	Tube [A x B x C]	190x141x621 mm	235x193x656 mm	235x193x774 mm
	Rack	-	-	482x177x454 mm [19"x4x454 mm]

WEIGHT	Net: 19kg Gross: 24kg	Net: 32kg Gross: 40kg	Net: 71kg Gross: 86kg	
--------	--------------------------	--------------------------	--------------------------	--

SYSTEM	Laser source, control and power electronics, CPU and scanners built into the laser tube.		Laser source, scanners, control electronics and CPU built into the laser tube. Power electronics built into the control rack.	
--------	--	--	--	--

OPTICS	Working distance (mm)	Focal length (mm)	Marking area (mm x mm)	Beam diameter MODELS PLUS UHS (µm)
	85	95	60x60	<256µm -0
	115	125	75x75	<337µm -0
	150	160	100x100	<432µm -S
	190	200	100x100	<540µm -0
	230	240	150x150	<648µm -0
	310	320	200x200	<864µm -0
	400	410	250x250	<1107µm -0

µm: microns S: Standard O: Optional

SOFTWARE	<ul style="list-style-type: none"> ScanLinux V5.2.7 and higher. Software Marca V5.6.9.a and higher. Internal bar code. Software Marca Lite.
----------	---

USER INTERFACE	Hand held terminal / Touch screen / PC
----------------	--

CONTROL BY	<ul style="list-style-type: none"> Hand held terminal with ScanLinux software. Touch screen with ScanLinux software. Full graphics interface: it includes Marca™ software, Hasp key and Ethernet cable [TCP/IP]. Software Marca Lite: it includes Marca™ software, Hasp key and Ethernet cable [TCP/IP].
------------	--

MARKING HEAD	KS-1000 - 9,3 µm	KS2-1000 - 10,2 µm	K-1000 - 10,6 µm
	CO2 sealed laser tube R.F. technology Wavelength: 9,3 microns	CO2 sealed laser tube R.F. technology Wavelength: 10,2 microns	CO2 sealed laser tube R.F. technology Wavelength: 10,6 microns
	Beam pointer- Shaft encoder kit - Mounting support - Photocell kit		

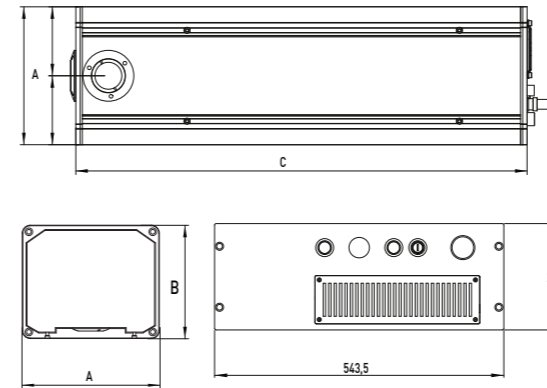
ACCESSORIES	Beam pointer- Shaft encoder kit - Mounting support - Photocell kit			
ENVIROMENTAL CONDITIONS	10°C [50°F] to 40°C [104 °F] external temperature Humidity <95% non-condensation No vibrations			

K-1010 PLUS UHS (10.6 µm) SPEED	PAPER LABEL	Max. Speed line (m/min)	Cadence (lmm)		Scanners speed (mm/s)			
			1 Line / 8 Charact.	140	156	122	120	1500
		2 Line / 8 Charact.	80	80	122	122	1500	200
		3 Line / 8 Charact.	53	54	118	120	1500	200
	PET	Max. Speed line (m/min)	Cadence (lmm)		Scanners speed (mm/s)			
			1 Line / 8 Charact.	116	106	127	125	1000
		2 Line / 8 Charact.	58	57	118	116	1000	400
		3 Line / 8 Charact.	38	35	116	117	1000	400
	PAINTED ALUMINIUM	Max. Speed line (m/min)	Cadence (lmm)		Scanners speed (mm/s)			
			1 Line / 8 Charact.	87	78	117	119	700
		2 Line / 8 Charact.	44	40	120	118	700	600
		3 Line / 8 Charact.	28	26	117	120	700	600
	Cristal Font type: Matrix:7x5 Speed:60000 Microstep:50 Delay: 40	Max. Speed line (m/min)	Cadence (lmm)		Scanners speed (mm/s)			
			4 Line / 8 Charact.	20	19	109	113	700

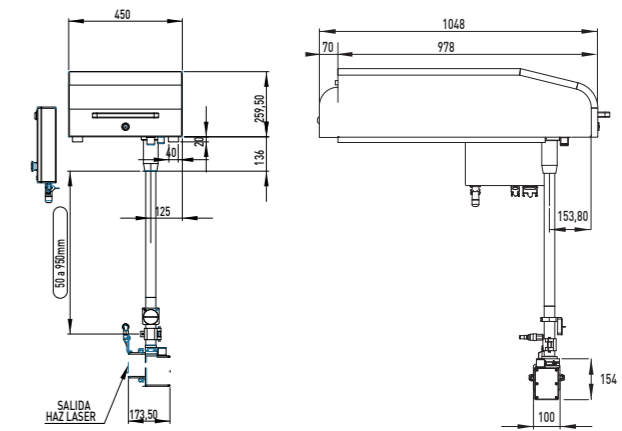
Normal → Newpal Font
Italic → Crystal Font

KIP-1000 PLUS IP65

KIP-1010/30



KIP-1080



SYSTEM TYPE	KIP-1010 SP net IP65	KIP-1010 PLUS IP65	KIP-1010 PLUS UHS IP65	KIP-1030 SP net IP65	KIP-1030 PLUS IP65	KIP-1030 PLUS UHS IP65	KIP-1080 PLUS UHS IP65
POWER	10W			30W			80W
WAVELENGTH	9.3µm / 10.2 µm / 10.6 µm						
MAINS SUPPLY	125V / 230V 50/60 Hz [1 Fase + N] 300VA			125V / 230V 50/60 Hz [1 Fase + N] 600VA			125V / 23 V 50/60 Hz [1 Fase + N] 1900VA

DIMENSIONS	Tube [A x B x C]	216.5x164 x621.5 mm	260x193x656 mm	-
	Rack	-	-	450x279.5x1048 mm
	Split Head	-	-	154x100x174 mm

WEIGHT	Net: 14kg Gross: 18kg	Net: 26kg Gross: 32kg	Net: 80kg Gross: 95kg
--------	--------------------------	--------------------------	--------------------------

SYSTEM	Laser source, control and power electronics, CPU and scanners built into the laser tube.			Laser source, control and power electronics and CPU built into the rack. Scanners built into the external head. External control panel.
--------	--	--	--	---

OPTICS	Working distance (mm)	Focal length (mm)	Marking area (mmxmm)	Beam diameter MODELS SP net (µm)	Beam diameter MODELS PLUS (µm)	Beam diameter MODELS PLUS UHS (µm)
	85	95	60x60	<385µm -S	<192µm -0	<256µm -0
	115	125	75x75	<506µm -0	<253µm -0	<337µm -S
	190	200	100x100	<810µm -0	<405µm -S	<432µm -0
	230	240	150x150	<972µm -0	<486µm -0	<540µm -0
	310	320	200x200	<1296µm -0	<648µm -0	<648µm -0
	400	410	250x250	<1660µm -0	<830µm -0	<864µm -0

µm: microns S: Standard O: Optional

SOFTWARE	<ul style="list-style-type: none"> ScanLinux V5.2.7 and higher. Software Marca V5.6.9.a and higher. Internal bar code. Software Marca Lite.
----------	---

USER INTERFACE	Hand held terminal / Touch screen / PC
----------------	--

CONTROL BY	<ul style="list-style-type: none"> Hand held terminal with ScanLinux software. Touch screen with ScanLinux software. Full graphics interface: includes Marca software™, dongle and Ethernet cable [TCP / IP]. Marca Lite software: includes Marca™ software, dongle and Ethernet cable [TCP / IP]
------------	---

ACCESSORIES	Beam pointer- Shaft encoder kit - Mounting support - Photocell kit
-------------	--

ENVIROMENTAL CONDITIONS	10°C [50°F] to 40°C [104 °F] external temperature Humidity <95% non-condensation No vibrations
-------------------------	--